

Cherokee Lake Sailing Club

2025 Wyss Memorial Distance Race Sailing Instructions

1. Rules

1.1 This race will be governed by the *Racing Rules of Sailing 2025 – 2028* & the *CLSC Pursuit Race Instructions, 2025 Spring Series* unless specifically modified by these Sailing Instructions.

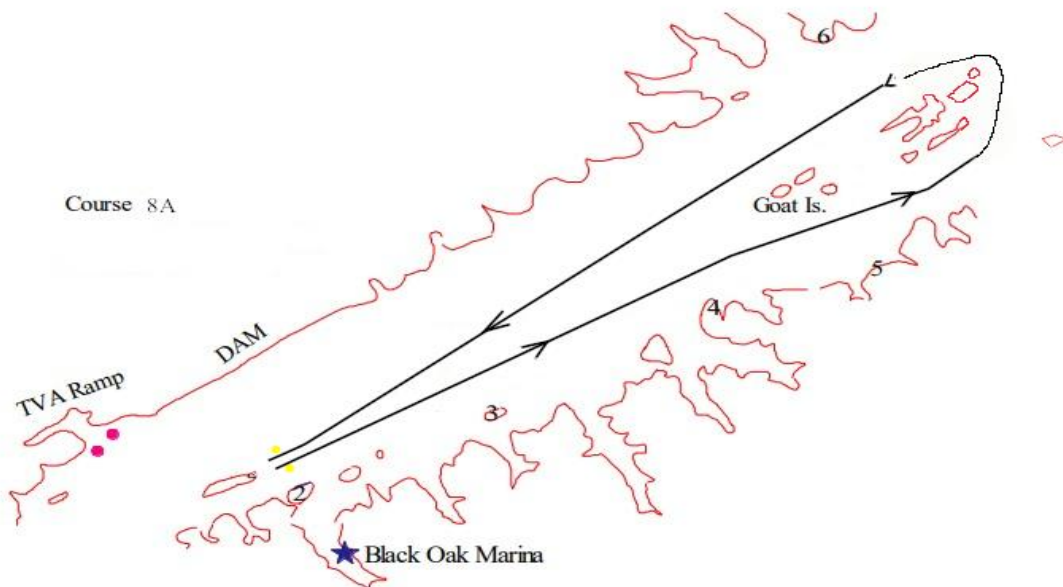
5. Courses

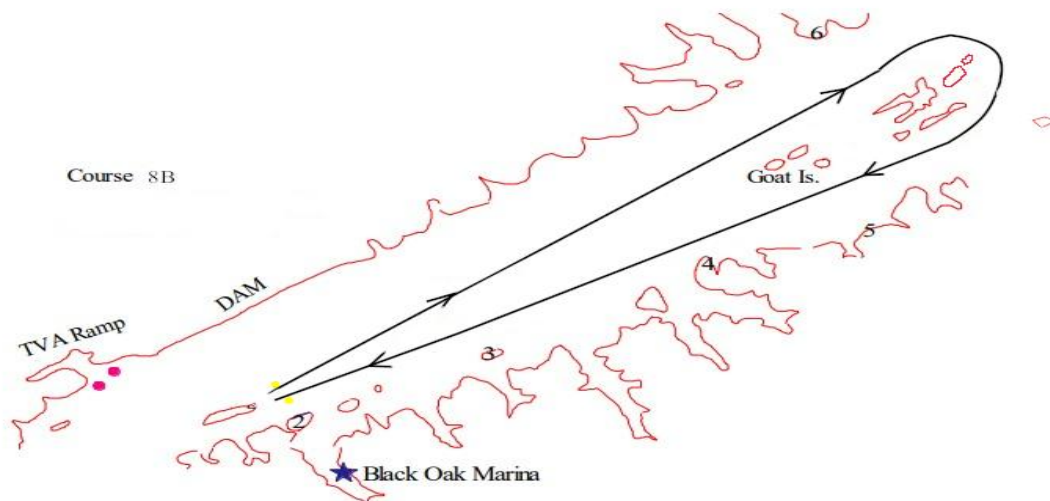
Courses 8 A & 8 B: Panther Creek (8.6 miles)

Pass through the Start line leaving the CLSC buoy to **Port**.

Proceed to the island group located mid-lake, between May Spring and Panther Creek, leave the group to Port in Course 8A or Starboard in Course 8B.

Proceed to the Finish line leaving the TVA buoy to **Port**.





Courses 9A & 9B: Island 9 (10.8 miles)

Pass through the Start line, leaving the CLSC buoy to **Port**.

Proceed to round the island designated with Day Board 9 to Port (Course 9A) or Starboard (Course 9B).

Proceed to the Finish line, leaving the TVA buoy to **PORT**.



6.3 Boats will be considered ***Racing*** five minutes prior to their assigned Start Times and must be off moorings ten minutes before that start time.